

LEAN LINE



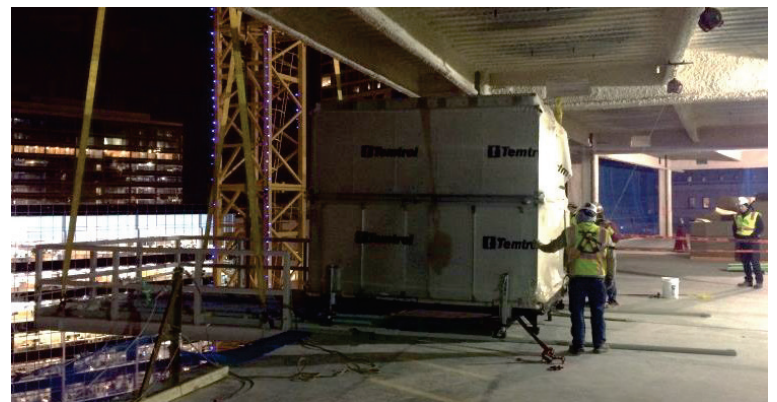
Taking Lean Innovations to New Heights

Creative thinking and developing a better way to perform our tasks are basic principles of Lean construction. When the team started talking about how to lift air handling units on to each of the over 30 floors of a new skyscraper being built, their minds went into creative mode.

The project team worked together to develop a material lifting platform. Grunau Metals designed and fabricated the piece. The foremen did a dry-run test in September to work out any kinks before actual use. The lifting platform was then put into action on the jobsite in December.

The platform is designed and engineered specifically for the dual path air handling units with a track for the wheels, as well as load securement. The platform is flown up to the concrete floor and secured to the building using come-a-longs. The dual path air handling units are pulled off of the platform using an electronic winch and set into place. A couple tweaks were made after the first uses and additional improvements may be made as we continue to utilize this innovation.

It was a successful total team effort and will be used many more times during the months ahead as the skyscraper continues to build upward.



Lean Mission: To continually examine our processes to provide greater value to our customers without waste.