

To continually examine our processes to provide greater value to our customers without waste.

The Lean Line

Sustaining

The 5th “S” in the 5Ss of our Lean Tools is “Sustain”. Sustaining is the end result of how well we have performed the previous four Ss. In the sustaining stage, people should also think of ways to eliminate effort in maintaining an area. For example:

- A vacuum system may be attached to a saw to limit sawdust clean-up
- Small hardware in pre-sorted bins that you take with you to do your task can minimize sorting items back into larger bins later
- Filing paperwork consistently and systematically helps others in your department find documents when you may be out of the office

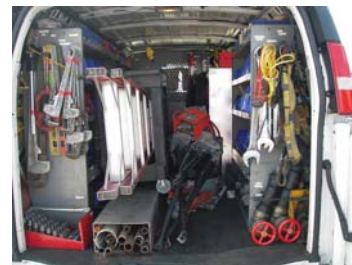
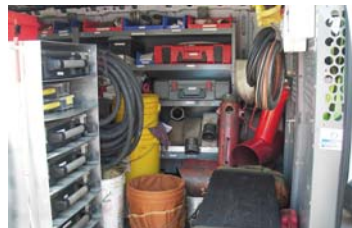
Sometimes a reminder can help each day or week via an alarm, email task reminder or posted written notes (i.e. see photo at right). Be creative and implement other ways to help you sustain the appearance and efficiency of your work area, whether it be an office cubicle, shop space, job site, or vehicle.



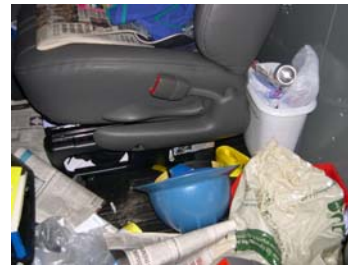
We periodically audit the trucks and shops that have been through a 5S Lean event to ensure they are being sustained in the 5S fashion. That means items should still be able to be found in 30 seconds or less; labels should be evident; items should be in the right places; and the space should be clean and well maintained.

Below is a visual of 2 different trucks. The properly sustained one was checked about 15 months from the date of the 5S event and looked like the day it rolled out of the event. The photos of one that was not sustained were taken after only about 2 months & then 5 months past its 5S event date. These were random audits, not pre-arranged.

WHAT SUSTAIN IS:



WHAT SUSTAIN IS NOT:



A lot of time and energy is put forth in 5S events so it is important not only to your own job efficiency, and our customer's perception, but also shows respect for yourself and your fellow team members when you sustain. Let's all make the effort to keep our work areas as efficient as possible.